

NATF Redacted Operating Experience Report

Truck Fell Off Lift Incident

About NATF Redacted Operating Experience (OE) Reports

North American Transmission Forum (NATF) operating experience reports highlight positive or negative transmission (reliability or resiliency) experiences worth sharing for learning opportunities or potential trending. The overall goal is to help each other learn without experiencing the same issues first-hand. This sharing originates confidentially within the NATF membership.

Redacted operating experience reports are posted on the NATF public website to allow the NATF and its members to more broadly share information, especially safety-related alerts and learnings, with contractors and other utilities to benefit the industry at large.

The NATF member company that submitted the initial restricted distribution OE report for this topic/event has approved the NATF to issue this redacted OE report.

Open Distribution

Copyright © 2020 North American Transmission Forum. Not for sale or commercial use. All rights reserved.

Disclaimer

This document was created by the North American Transmission Forum (NATF) to facilitate industry work to improve reliability and resiliency. The NATF reserves the right to make changes to the information contained herein without notice. No liability is assumed for any damages arising directly or indirectly by their use or application. The information provided in this document is provided on an “as is” basis. “North American Transmission Forum” and its associated logo are trademarks of NATF. Other product and brand names may be trademarks of their respective owners. This legend should not be removed from the document.

Topic

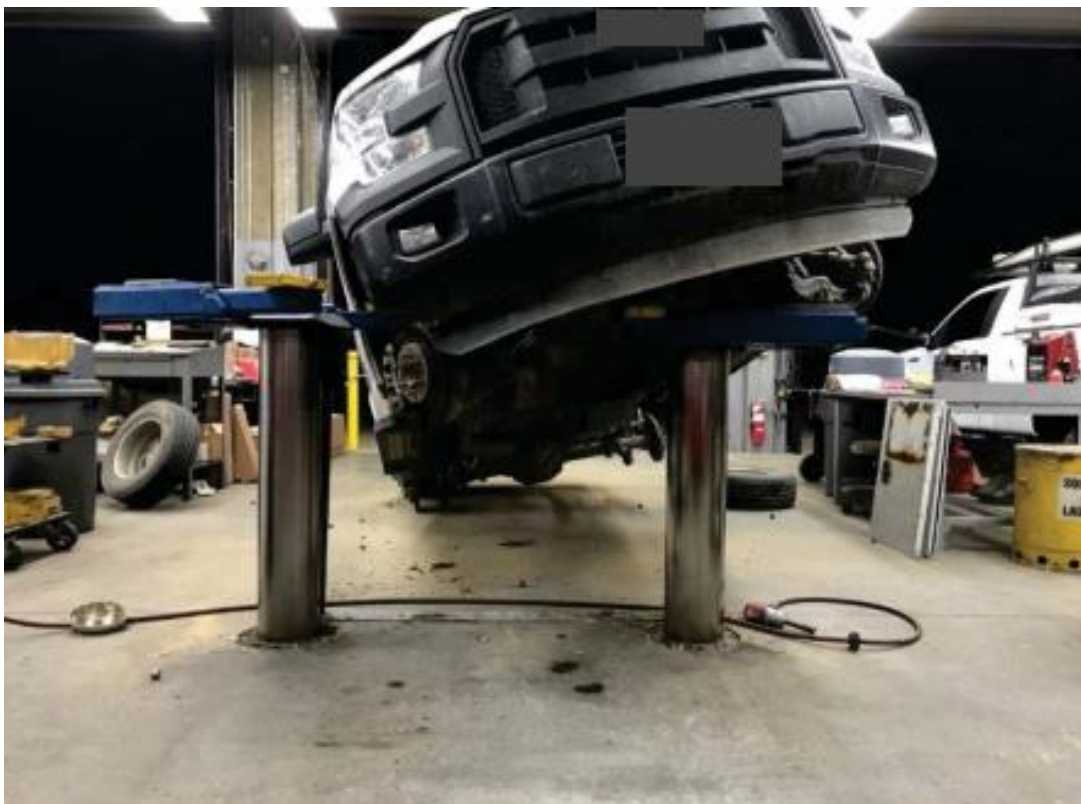
Truck Fell Off Lift Incident

Description

A truck fell off a two-post in-ground lift after having been raised approximately four feet. The truck was damaged, but no employees were injured. The task involved lifting the truck to remove the rear tires, transferring the front tires to the rear, and replacing the front tires.

After the truck was driven onto the lift, the two-post lift arms, which were under the truck frame (with cleats in the opposite direction), were raised in the air. The technician did not notice anything out of the ordinary and removed the two rear tires. The technician then removed the driver's side front tire. When the technician took off the passenger side tire, the truck slid off the lift, resulting in the bed of the truck hitting the ground. The vehicle was supported by the two-post lift in the front, which was at the same height prior to the incident.

The lift was subsequently placed out of service. Following the incident, the technician noted a heavy grey bin in the truck bed. (The technician did not check the bed prior to lifting the truck.)



After image: truck and two-post lift



Material in bed of truck

Lessons Learned

1. Process controls related to vehicle-lift operation were less than adequate to prevent vehicle damage and personal injury.
2. Less-than-adequate practices to ensure new-employee proficiency—regarding training and supervisory oversight prior to permitting independent performance of work activities—associated with the operation of the vehicle lift.

Actions Taken

Process changes to implement the following:

1. Ensuring employees are proficient on the vehicle-lift operation before performing work.
2. Ensuring vehicles are lifted at the vehicle manufacturer's recommended lift points.
3. Checking for weight distribution for any potential impact on the center of gravity prior to lifting.
4. Once the vehicle tires clear the floor, shaking vehicle moderately at front or rear bumper to ensure the vehicle is stable.
5. Using jack stands whenever removing vehicle parts or standing under the vehicle.

Extent of Condition

This condition applies to garage locations with hydraulic vehicle lifts.